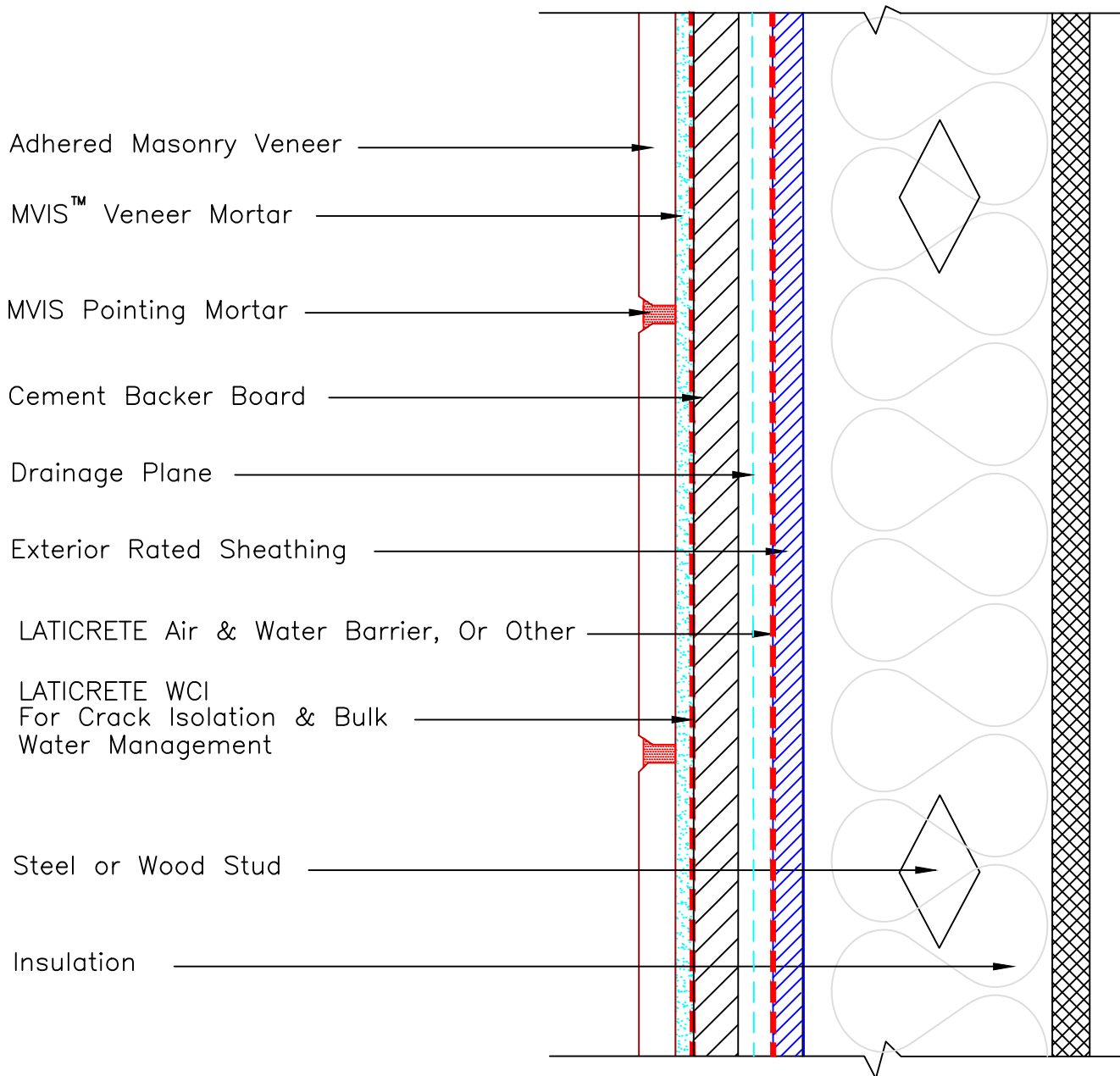


# Drawing No. MVIS 102 – MVM Drainage Plane



NOTE: This detail shows a conceptual thin brick or adhered masonry veneer system installed over a drainage layer. The drainage plane/board creates a path for moisture which has penetrated the assembly to escape. Weep holes are typically provided at the bottom of the wall system to allow moisture to escape. Maximum allowable deflection under all live, dead and impact loads, including concentrated loads, must not exceed  $L/600$  where  $L$ =span length. LATICRETE details are provided specifically to address the installation of the adhered veneer using LATICRETE products. Design principles and specifications, including but not limited to types and location of insulation, fasteners, air and water barriers, and vapor diffusion retarders, incorporated into the final details are the responsibility of the project design professional in compliance with all applicable building codes.

Revision Date: 5/21 Scale: N.T.S.

AS A PROFESSIONAL COURTESY, LATICRETE OFFERS TECHNICAL SERVICES FREE OF CHARGE. THE USER MAINTAINS ALL RESPONSIBILITY FOR VERIFYING THE APPLICABILITY AND SUITABILITY OF THE TECHNICAL SERVICE OR INFORMATION PROVIDED.

(C)2021 LATICRETE INTERNATIONAL, INC. ALL RIGHTS RESERVED. THE RIGHT TO UTILIZE LATICRETE DETAILS FOR COMMERCIAL PURPOSES IS GRANTED EXCLUSIVELY TO CONTRACTORS, ARCHITECTS, QUANTITY SURVEYORS, ENGINEERS, AND SPECIFICATIONS WRITERS. LATICRETE (R), LATAPOXY (R) ARE REGISTERED TRADEMARKS OF LATICRETE INTERNATIONAL, INC. US & FOREIGN PATENT AND TRADEMARK OFFICES. MARCA REGISTRADA. ALL OTHER TRADEMARKS ARE PROPERTY OF THEIR RESPECTIVE COMPANIES.