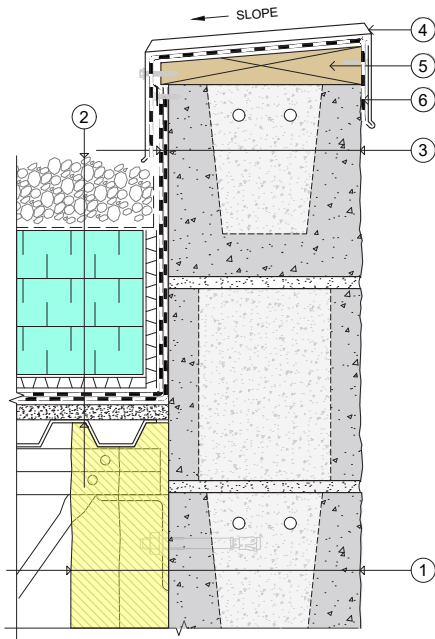
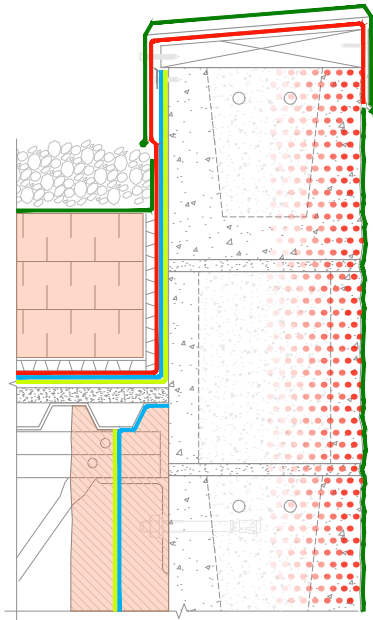


SINGLE-WYTHE CMU WALL: Roof Parapet Detail



Detail 7-5 Single-Wythe CMU Wall: Roof Parapet Detail



Water-Shedding Surface and Control Layers of Detail 7-5

Legend

1. Typical Assembly:
 - Interior gypsum board
 - Steel-framed wall
 - Closed-cell spray foam (CCSPF) insulation between studs, min. 2 inches continuous CCSPF
 - Single-wythe CMU wall with water-repellent admixture at block and mortar
 - Clear water-repellent
2. Inverted roof membrane assembly
3. Typical Parapet Assembly:
 - Inverted roof membrane
 - Single-wythe CMU wall with water-repellent admixture at block and mortar
 - Clear water repellent
4. Standing-seam sheet-metal coping with gasketed washer fasteners
5. Preservative-treated wood blocking
6. High-temperature self-adhered membrane

Detail Discussion

The sheet-metal coping with hemmed drip edge sheds water away from the wall top and CMU wall face below. It is recommended that the sheet-metal coping counterflash the top course of block by a minimum of 3 inches.

The CCSPF extends tight up to the underside of the deck and around roof structure and anchor elements. This reduces the opportunity for warm, moisture-laden interior air to contact the deck and CMU wall where it's coldest.

Water-Shedding Surface & Control Layers

— Water-Shedding Surface

Control Layers:

— Water

— Air

— Vapor

— Thermal