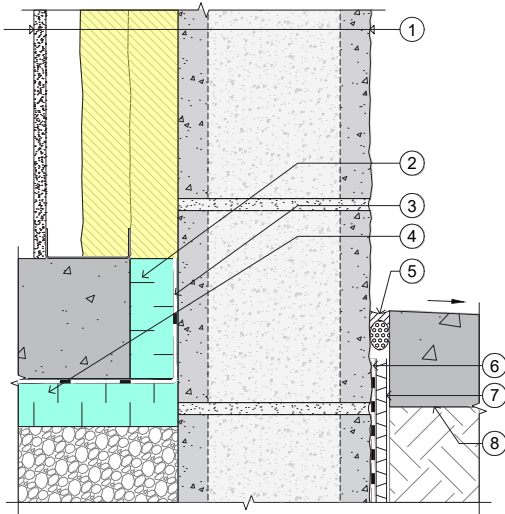


## SINGLE-WYTHER CMU WALL: Base-of-Wall Detail



Detail 7-4 Single-Wythe CMU Wall: Base-of-Wall Detail

### Legend

1. Typical Assembly:
  - Interior gypsum board
  - Steel stud-framed wall
  - Closed-cell spray foam (CCSPF) insulation between studs (optional) and min. 2 inches continuous CCSPF
  - Single-wythe CMU wall with water-repellent admixture at block and mortar
  - Clear water-repellent
2. Rigid XPS insulation
3. Underslab vapor barrier
4. Rigid XPS underslab insulation
5. Hardscape sealant joint
6. Damp-proofing (optional)
7. Drainage composite or gravel backfill
8. Hardscape

### Detail Discussion

The XPS insulation provides a thermal break between the concrete floor slab and the single-wythe CMU wall. This allows for thermal continuity between the underslab insulation and wall insulation.



Water-Shedding Surface and Control Layers of Detail 7-4

### Water-Shedding Surface & Control Layers

— Water-Shedding Surface

Control Layers:

- Water
- Air
- Vapor
- Thermal