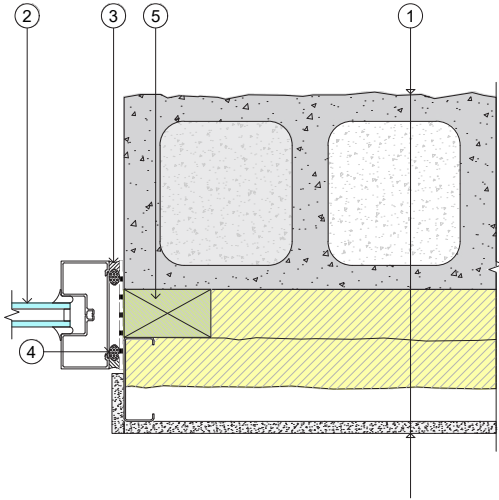


SINGLE-WYTHE CMU WALL: Window Jamb Detail



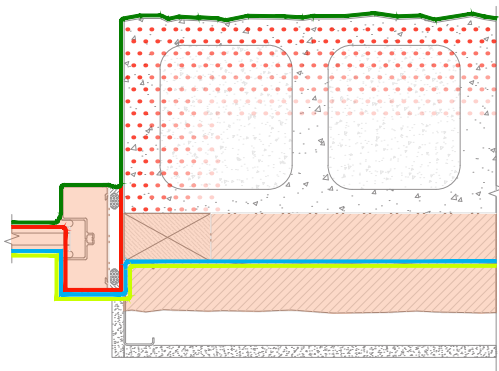
Legend

1. Typical Assembly:
 - Interior gypsum board
 - Steel stud-framed wall
 - Closed-cell spray foam (CCSPF) insulation between studs (optional) and min. 2 inches continuous CCSPF
 - Single-wythe CMU wall with water-repellent admixture at block and mortar
 - Clear water-repellent
2. Storefront window
3. Sealant joint over backer rod
4. Continuous air barrier sealant tied to continuous seal at window perimeter
5. Preservative treated wood blocking

Detail 7-3 Single-Wythe CMU Wall: Window Jamb Detail

Detail Discussion

The window is aligned with the rough opening blocking and insulation, rather than with the CMU wall, to provide better continuity of the thermal control layer. The continuous air barrier sealant joint, along with the flashing membrane, provide continuity of the air and water control layer.



Water-Shedding Surface & Control Layers

— Water-Shedding Surface

Control Layers:

— Water

— Air

— Vapor

— Thermal

Water-Shedding Surface and Control Layers of Detail 7-3