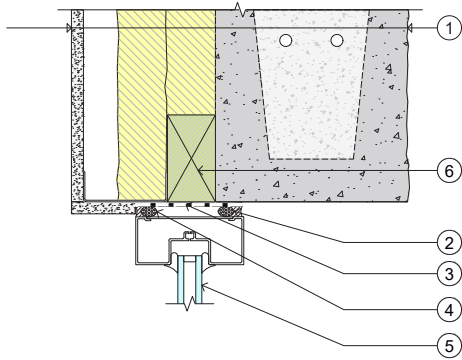
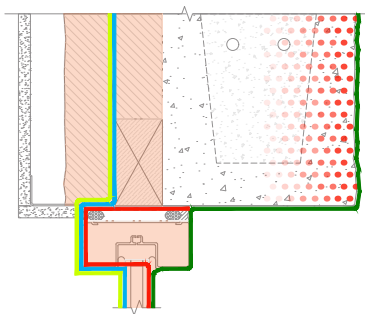


SINGLE-WYTHE CMU WALL: Window Head Detail



Detail 7-1 Single-Wythe CMU Wall: Window Head Detail



Water-Shedding Surface and Control Layers of Detail 7-1

Legend

1. Typical Assembly:
 - Interior gypsum board
 - Steel stud-framed wall
 - Closed-cell spray foam (CCSPF) insulation between studs (optional) and min. 2 inches continuous CCSPF
 - Single-wythe CMU wall with water-repellent admixture at block and mortar
 - Clear water-repellent
2. Sealant over backer rod
3. Fluid-applied air barrier and WRB flashing membrane
4. Continuous air barrier sealant tied to continuous seal at window perimeter
5. Storefront window
6. Preservative treated wood blocking

Detail Discussion

The flashing membrane extends from the interior framing to the CMU rough opening. The flashing membrane and the continuous air barrier sealant joint provide air and water control layer continuity from the window to the CMU wall.

Blocking at the window perimeter provides a low-conductivity solution for mechanically attaching the window as required by the window manufacturer.

Water-Shedding Surface & Control Layers

Water-Shedding Surface

Control Layers:

Water

Air

Vapor

Thermal