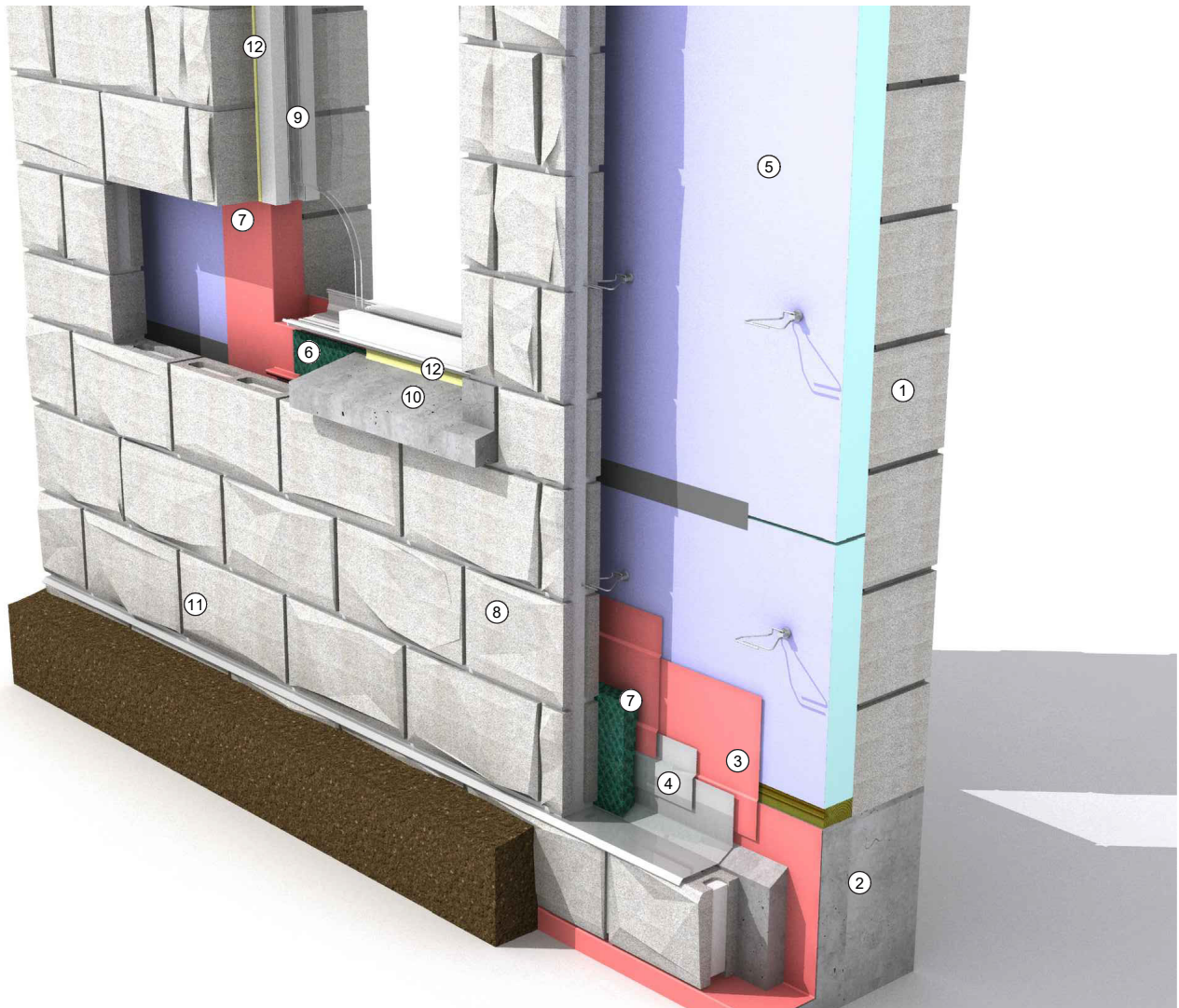


CMU BACKUP WALL: Base-of-Wall 3D Detail



Detail 6-7 CMU Backup Wall: Base-of-Wall 3D Detail

Legend

1. Single-wythe CMU wall
2. Concrete foundation element
3. Fluid-applied or self-adhered flashing membrane
4. Two-piece sheet-metal flashing with hemmed drip edge and end dams beyond, attached through the wood blocking
5. Faced rigid board insulation
6. Mortar collection mesh
7. Fluid-applied air barrier and WRB flashing membrane
8. Anchored masonry veneer
9. Storefront window
10. Sloped precast sill with chamfered drip edge and sealant over backer rod at precast joints
11. Vent/weep at maximum 24-inches on-center
12. Continuous sealant and backer rod

Refer to Detail 6-2, Detail 6-3, and Detail 6-4 for more information.