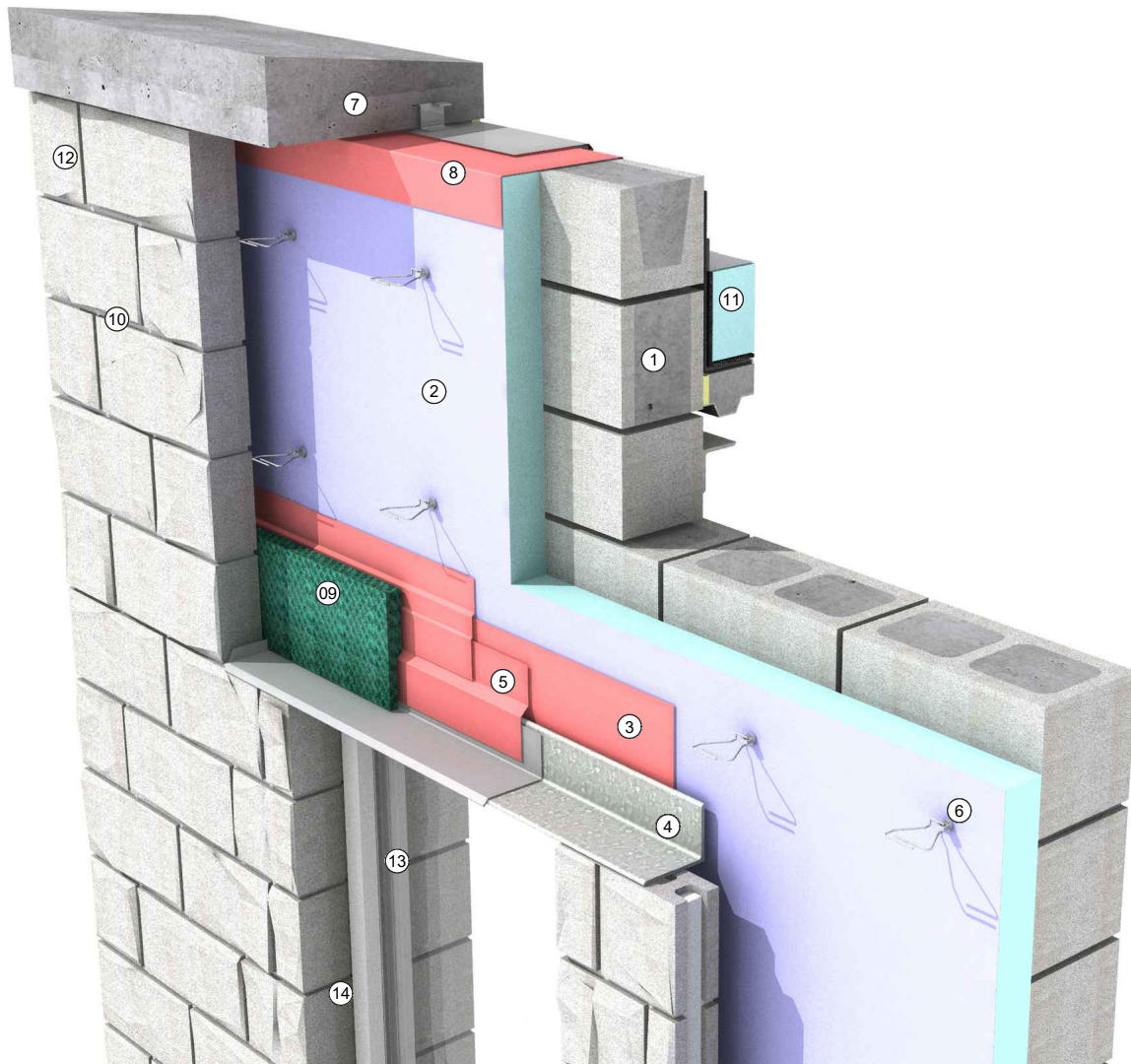


CMU BACKUP WALL: Roof Parapet 3D Detail



Detail 6-6 CMU Backup Wall: Roof Parapet 3D Detail

Legend

1. Single-wythe CMU wall
2. Faced rigid board insulation
3. Fluid-applied air barrier and WRB flashing membranes
4. Hot-dipped galvanized-steel loose lintel
5. Self-adhered flashing lapping on a sheet metal flashing with end dams (beyond)
6. Masonry veneer tie
7. Precast cornice with chamfered drip edge
8. High-temperature self-adhered membrane
9. Mortar collection mesh
10. Anchored masonry veneer
11. Inverted roof membrane assembly and roof structure
12. Vents at maximum 24-inches on-center (optional)
13. Storefront window
14. Sealant over backer rod

Refer to Detail 6-1, Detail 6-3, and Detail 6-5 for more information.