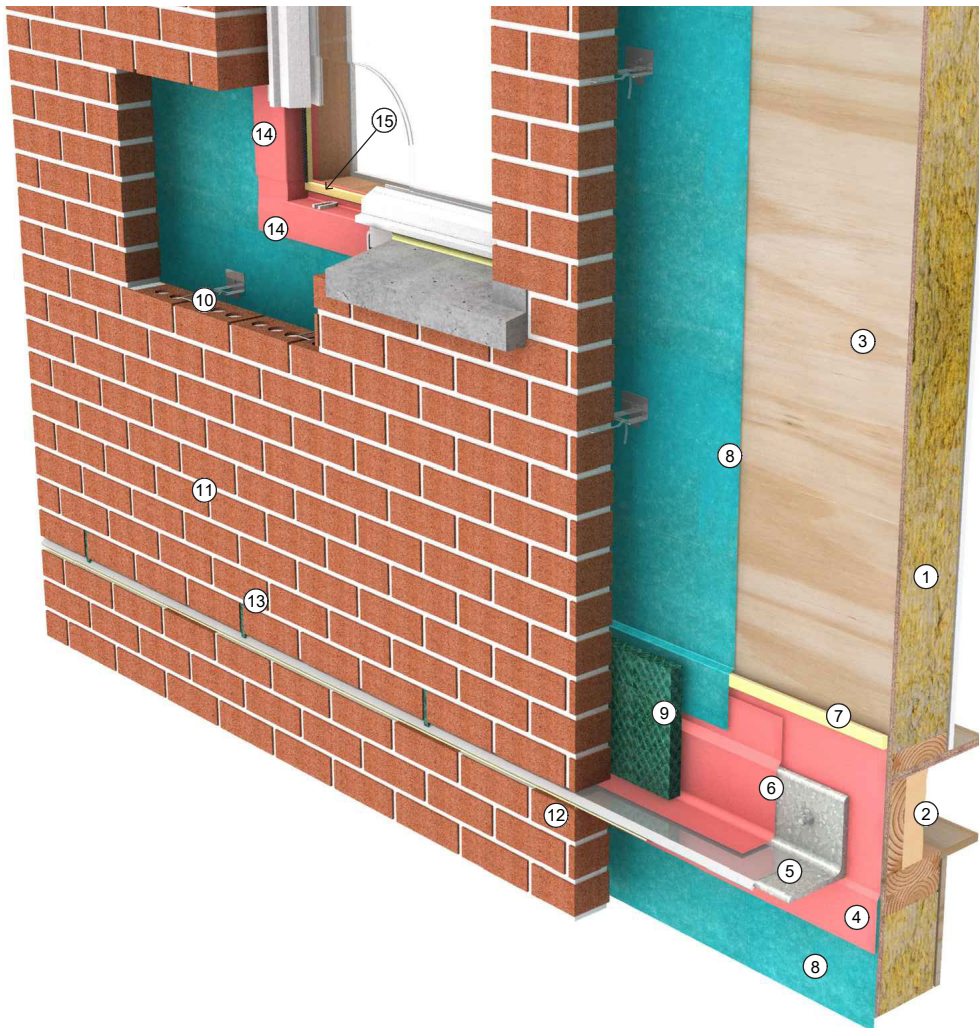


WOOD-FRAMED BACKUP WALL: Base-of-Wall 3D Detail



Detail 6-23 Wood-Framed Backup Wall: Base-of-Wall 3D Detail

Legend

1. Wood-framed wall with batt insulation
2. Closed-cell spray foam insulation
3. Exterior sheathing
4. Self-adhered or fluid-applied flashing membrane
5. Sheet-metal flashing with hemmed drip edge over hot-dipped galvanized-steel angle
6. Self-adhered or fluid-applied flashing membrane
7. Continuous air barrier sealant
8. Mechanically attached air barrier and WRB field membrane
9. Mortar collection mesh
10. Masonry veneer anchor, fastened through air barrier sealant, fluid-applied flashing membrane or self-adhered membrane patch per WRB system manufacturer recommendations
11. Anchored masonry veneer
12. Sealant over backer rod
13. Weep/vent at maximum 24-inches on-center
14. Self-adhered sheet- or fluid-applied air barrier and WRB flashing membrane
15. Continuous air barrier sealant tied to continuous seal at window perimeter