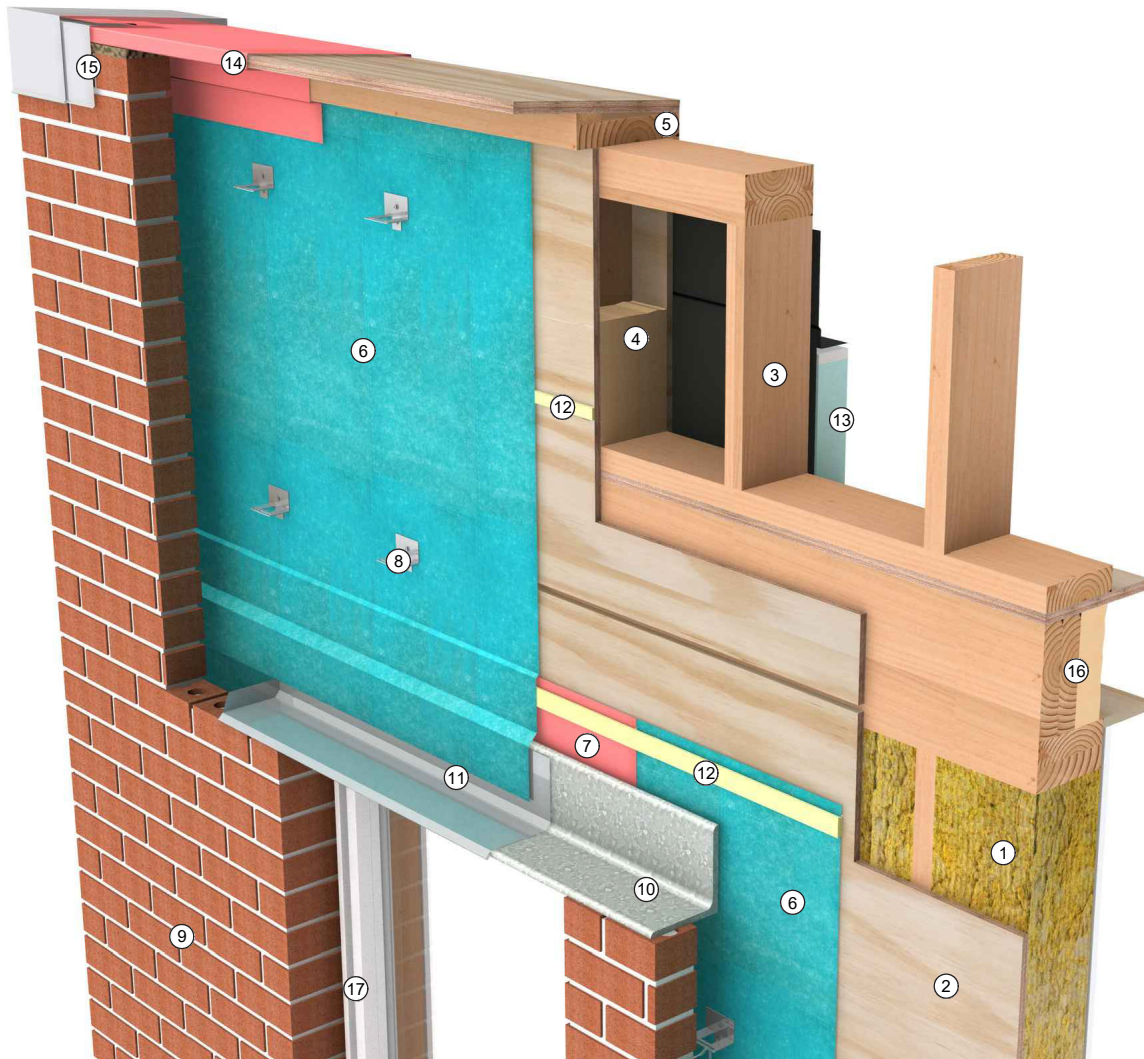


WOOD-FRAMED BACKUP WALL: Parapet 3D Detail



Detail 6-22 Wood-Framed Backup Wall: Parapet 3D Detail

Legend

- | | |
|---|---|
| <ol style="list-style-type: none"> 1. Wood-framed wall with batt insulation 2. Exterior sheathing 3. Vented wood-framed parapet 4. Closed-cell spray foam insulation 5. Sloped preservative-treated blocking 6. Mechanically attached air barrier and WRB field membrane 7. Sheet-applied or fluid-applied air barrier and WRB flashing membrane 8. Masonry veneer anchor, fastened through air barrier sealant, fluid-applied flashing membrane, or self-adhered membrane patch per WRB system manufacturer recommendations 9. Anchored masonry veneer 10. Hot-dipped galvanized-steel loose lintel 11. Sheet-metal head flashing with hemmed drip edge and end dams beyond 12. Continuous air barrier sealant | <ol style="list-style-type: none"> 13. Conventional roof assembly 14. High-temperature self-adhered membrane 15. Sloped standing-seam sheet-metal coping with gasketed washer fasteners 16. Closed-cell spray foam insulation 17. Flanged window |
|---|---|

Refer to Detail 6-17, Detail 6-19, and Detail 6-21 for more information.