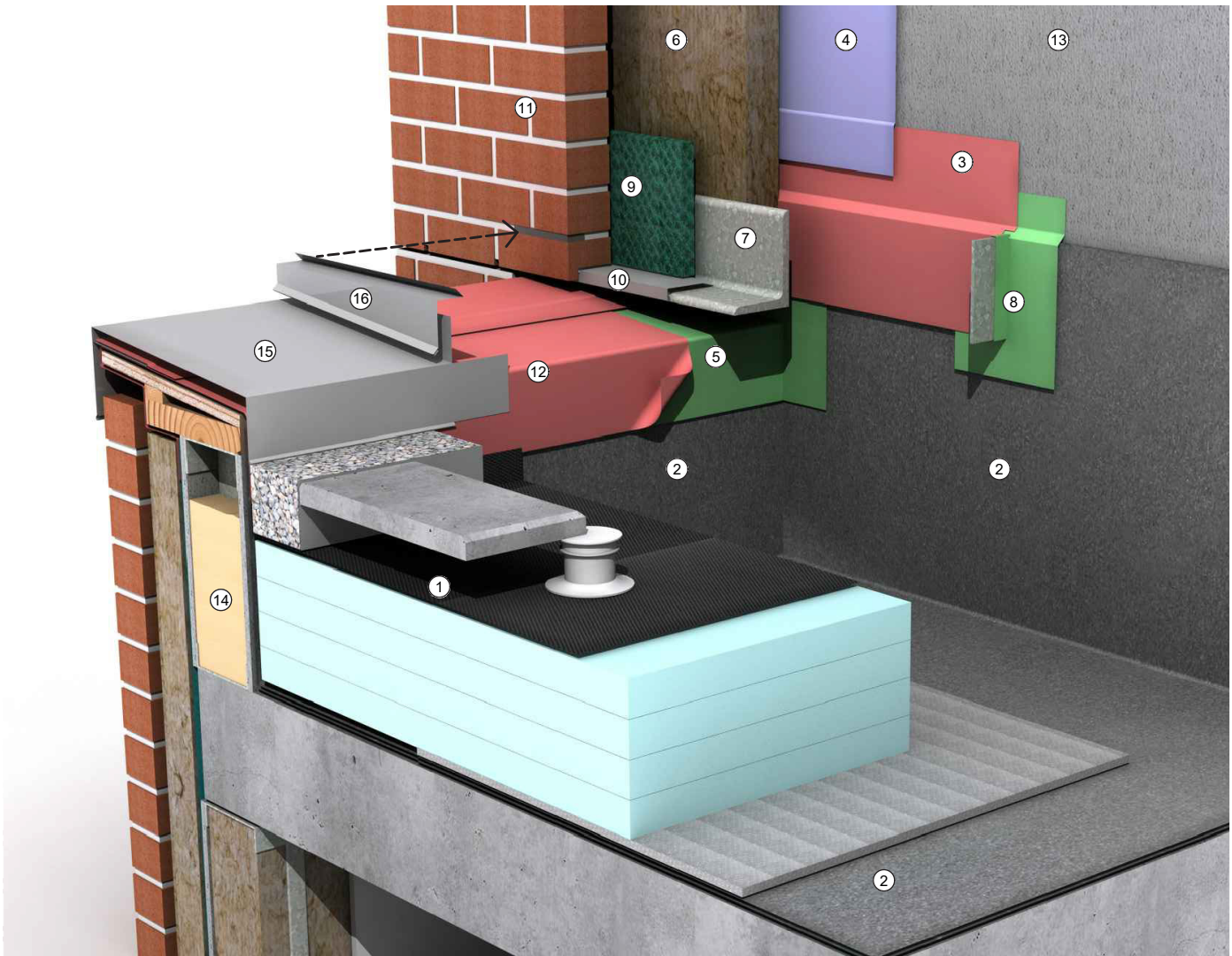


STEEL STUD-FRAMED BACKUP WALL: Saddle Flashing 3D Detail



Detail 6-16 Steel Stud-Framed Backup Wall: Saddle Flashing 3D Detail

Legend

- | | |
|--|---|
| <ol style="list-style-type: none"> 1. Inverted roof membrane assembly over concrete roof structure 2. Inverted roof membrane 3. Self-adhered or fluid-applied flashing membrane, lap over roof membrane termination, roof penetration flashing membrane, and parapet saddle flashing membrane 4. Self-adhered sheet- or fluid-applied air barrier and WRB field membrane 5. Parapet saddle flashing membrane, extend onto sloped parapet blocking beyond anchored masonry veneer wall face (above) 6. Semi-rigid mineral fiber exterior insulation 7. Hot-dipped galvanized-steel standoff shelf angle support on intermittent knife plates 8. Shelf angle knife plate support with roof penetration flashing membrane (per roof membrane manufacturer) 9. Mortar collection mesh | <ol style="list-style-type: none"> 10. Sheet-metal flashing with hemmed drip edge 11. Anchored masonry veneer 12. High-temperature self-adhered membrane, lap membrane over parapet saddle flashing membrane and roof membrane termination 13. Exterior sheathing 14. Closed-cell spray foam insulation within framed parapet 15. Sloped standing-seam sheet-metal coping, end dam at anchored masonry veneer face beyond 16. Sheet-metal counterflashing with spring lock inserted into mortar bed beyond, seal with a sanded sealant over backer rod |
|--|---|

Refer to Detail 6-12 and Detail 6-13 for more information.