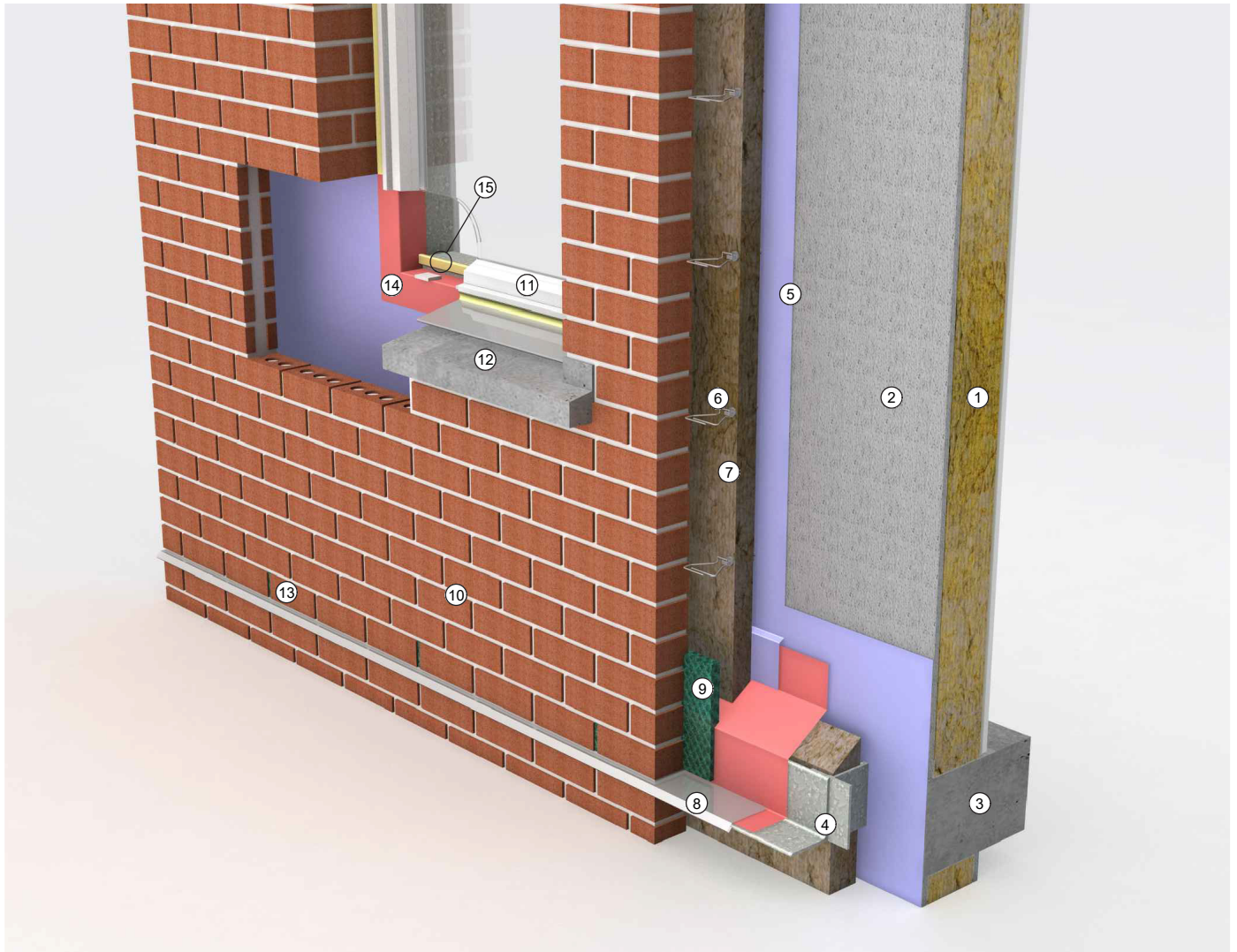


STEEL STUD-FRAMED BACKUP WALL: Base-of-Wall 3D Detail



Detail 6-15 Steel Stud-Framed Backup Wall: Base-of-Wall 3D Detail

Legend

- | | |
|---|--|
| <ol style="list-style-type: none"> 1. Steel stud-framed wall with batt insulation 2. Exterior sheathing 3. Concrete floor slab 4. Hot-dipped galvanized-steel standoff shelf angle support anchored on intermittent structural support 5. Self-adhered sheet- or fluid-applied air barrier and WRB field membrane 6. Masonry veneer anchor, fastened through air barrier sealant, fluid-applied flashing membrane, or self-adhered membrane patch per WRB system manufacturer recommendations 7. Semi-rigid exterior insulation 8. Sheet-metal flashing with hemmed drip edge 9. Mortar collection mesh 10. Anchored masonry veneer 11. Non-flanged window | <ol style="list-style-type: none"> 12. Sloped precast concrete sill with sloped sheet-metal sill flashing 13. Vent/weep at maximum 24-inches on-center 14. Self-adhered sheet- or fluid-applied air barrier and WRB flashing membrane 15. Continuous air barrier sealant tied to continuous seal at window perimeter |
|---|--|

Refer to Detail 6-9, Detail 6-10, and Detail 6-11 for more information.