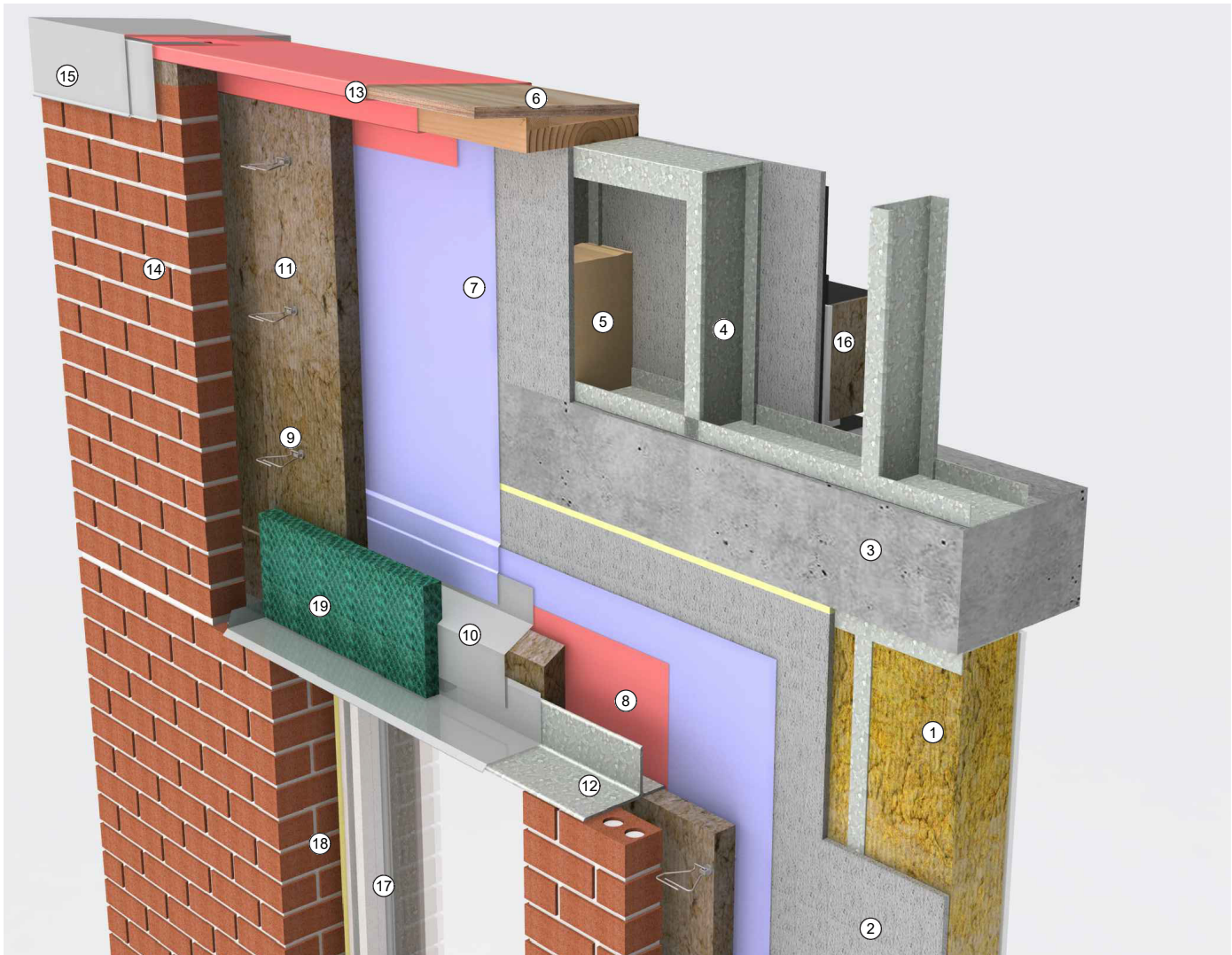


STEEL STUD-FRAMED BACKUP WALL: Parapet 3D Detail



Detail 6-14 Steel Stud-Framed Backup Wall: Parapet 3D Detail

Legend

- | | |
|---|---|
| <ul style="list-style-type: none"> 1. Steel stud-framed wall with batt insulation 2. Exterior sheathing 3. Concrete roof structure 4. Steel stud parapet framing 5. Closed-cell spray foam insulation plug 6. Sloped preservative-treated blocking 7. Self-adhered sheet- or fluid-applied air barrier and WRB field membrane 8. Self-adhered sheet- or fluid-applied air barrier and WRB flashing membranes 9. Masonry veneer anchor, fastened through air barrier sealant, fluid-applied flashing membrane, or self-adhered membrane patch per WRB system manufacturer recommendations 10. Two-piece sheet-metal head flashing with hemmed drip edge and end dams | <ul style="list-style-type: none"> 11. Semi-rigid exterior insulation 12. Hot-dipped galvanized-steel loose lintel 13. High-temperature self-adhered membrane 14. Anchored masonry veneer 15. Sloped standing-seam sheet-metal coping with gasketed washer fasteners 16. Inverted roof membrane assembly 17. Non-flanged window 18. Anchored masonry veneer 19. Mortar collection mesh |
|---|---|

Refer to Detail 6-8, Detail 6-10, and Detail 6-13 for more information.